

**roto**<sup>450s</sup>



***FAST. STABLE.  
RELIABLE.***



**MOTORBOATS**

[nautica.roto.eu](http://nautica.roto.eu)

A roto GROUP BRAND



## FAST AND COMPACT, made for multifunctional use

ROTO is a leading European manufacturer with over 45 years of experience in roto-moulding technology. ROTO provides a complete in house product solution such as product development, in-depth product analyse, tool production, prototyping, serial production (Manufacture, Assembly, QA), marketing & sales, distribution and after sales service.

Motorboat **ROTO 450s** is roto-moulded in one single piece and made with 3-layer sandwich technology. This ensures exceptional rigidity and high impact resistance while being low weight and achieving a high capacity load. The material itself ensures an amazing buoyancy, UV stability and low maintenance costs.

We believe **ROTO 450s** will set some new standards. An ergonomic design providing excellent versatility for home cruising, relaxing, fishing, working and rescuing.

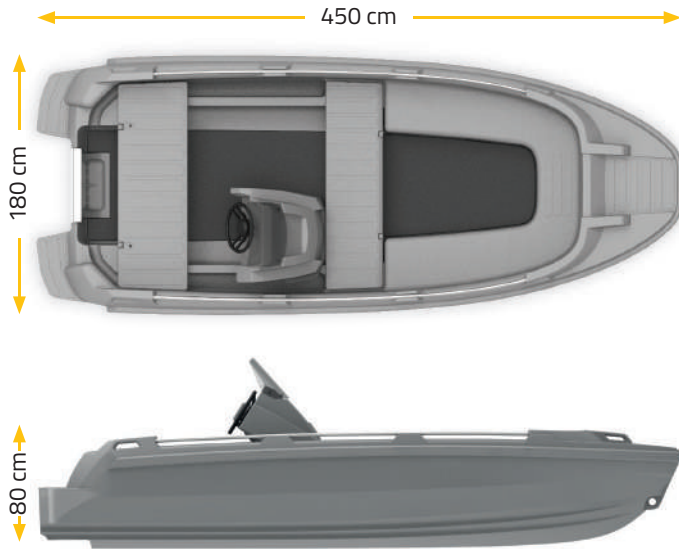
**ROTO 450s** is extremely easy to handle, robust, stable and reliable. All of this results in a high degree of security and safety for its users.

Environmentally conscious, ROTO is striving to achieve environmentally friendly products. The complete hull of the motorboat ROTO 450s is 100% recyclable and can also be optionally produced from recycled materials.





Winner of  
**Golden Innovation Award 2020**

# TECHNICAL DATA



  
**281-299** kg  
weight without engine

  
up to **20** HP  
engine size without  
steering console

  
**6-60** HP  
engine size with  
steering console

  
up to **7**  
number of persons

**ROTO 450s** is  
available in the  
following colors:



**C / D**  
boat category



## 3-LAYER TECHNOLOGY

Exceptional rigidity of the hull despite low weight

ROTO 450s is roto-moulded in one single piece and made with 3-layer technology. This multi-layered technology ensures a high performance hull with exceptional rigidity, high impact resistance and low weight.

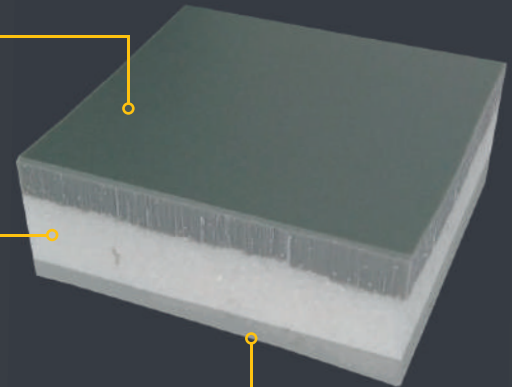
The material is UV stable, resistant to environmental factors (low and high temperatures) and high impact resistant. Maintenance is easy and inexpensive.

Motorboat **ROTO 450s** is available in 6 different colours. Alternative colours available by request.

**Super linear  
Polyethylene**

**Polyethylene  
foam**

**Linear  
Polyethylene**





3 layer - sandwich  
technology



High Impact  
resistant



Fast, stable,  
easy to handle



100 %  
Recyclable



Easy  
maintenance



Low  
weight

**roto** 450



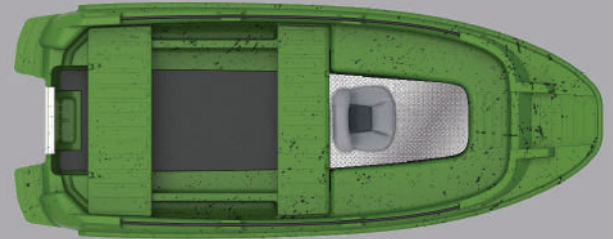
**roto**<sup>450s</sup> **BASIC**

ROTO 450s BASIC. Suitable for anyone looking for an **entry model** into the world of motor boats for general purpose (rentals, fish farms, personal craft, etc..).



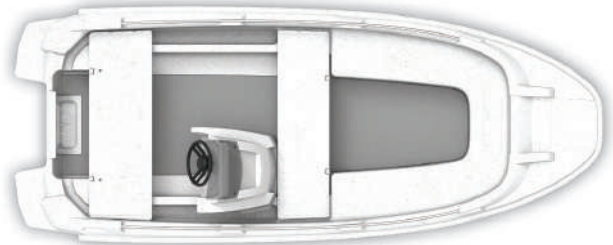
**roto**<sup>450s</sup> **FISHING**

ROTO 450s FISHING version is designed specifically for all **fishing enthusiasts**. Its green base color with addition of black tones is ideal to blend with the surrounding nature.



**roto**<sup>450s</sup> **FAMILY**

ROTO 450s FAMILY is a **family version** with a sporty soul. It is suitable for anyone looking for a safe and reliable boat for daily trips and escapes from everyday life. It is also suitable as an accompanying vessel.





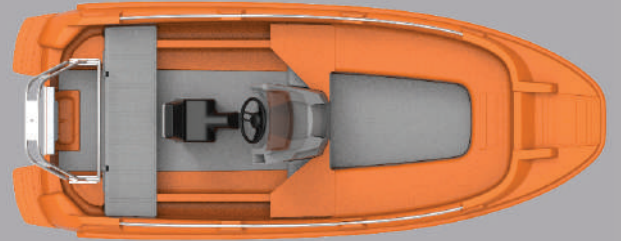
## roto<sup>450s</sup> RESCUE

ROTO 450s RESCUE version is **designed specifically for firefighters and other rescuers** from water. Its red base color is ideal to get noticed in case of emergency. Certificated module B+F.



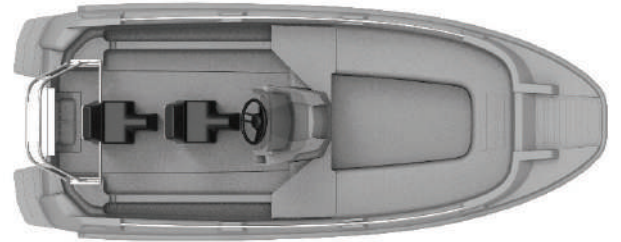
## roto<sup>450s</sup> XR1

ROTO 450 XR1 is a **centrally positioned version** of the boat. The jockey seat allows higher seating position and amazing balance for single use. It is suitable for everyone who is looking for something different.



## roto<sup>450s</sup> XR2

ROTO 450 XR2 is a level up of the XR1 version of the boat. Two Jockey seats provide a **unique motorboat driving experience**. A higher sitting position and better balance are another advantage of this model.









# EQUIPMENT for side console version



Targa



35 l fuel tank



Sundeck box



30 l fuel tank for sundeck box

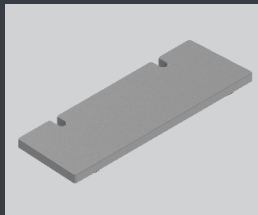
Ladder

Navigation light

Backrest with cushion



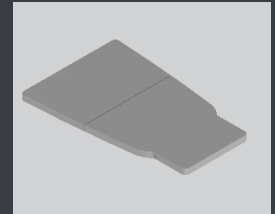
Cushion rear & front bench



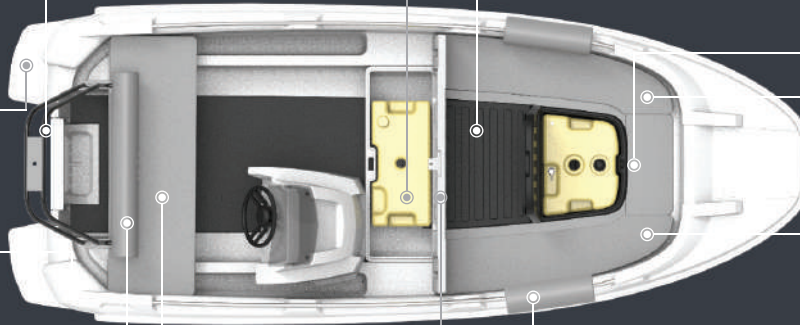
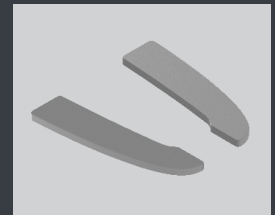
Pillow



Cushion Sundeck



Cushion side benches





# EQUIPMENT for central console version



Targa



Sundeck box

Jockey seat

30 l fuel tank for sundeck box

Ladder



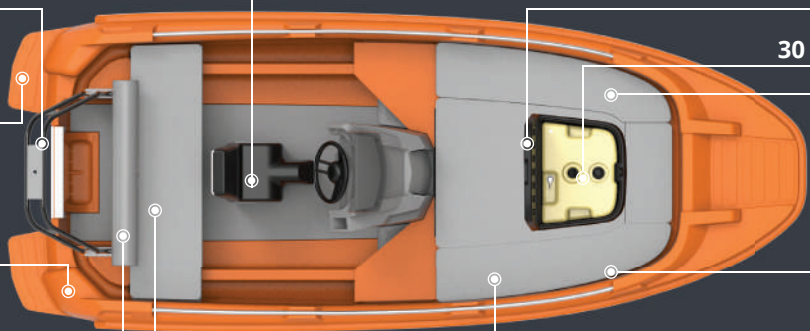
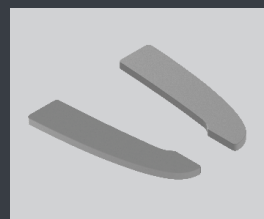
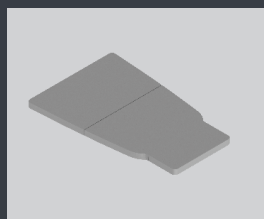
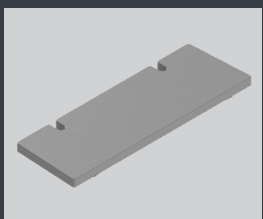
Navigation light

Backrest with cushion

Cushion rear bench

Cushion Sundeck

Cushion side benches





## SERIAL EQUIPMENT

	ROTO 450s BASIC	ROTO 450s FISHING	ROTO 450s FAMILY	ROTO 450s RESCUE	ROTO 450 XR1	ROTO 450 XR2
Stainless steel handrails	•	•	•	•	•	•
Two aluminium plates in the transom	•	•	•	•	•	•
Rear bench	•	•	•	•	•	
Front bench	•	•	•	•		
Console with windshield and steering wheel			•	•		
Central console with windshield and steering wheel					•	•
Walking cover for front with metal plate		•				
Jockey seat					•	• (2 pcs)

## OPTIONAL EQUIPMENT

	Family package (optional)
Sundeck box	
Fuel tank 35 l designed for front bench	
Fuel tank 30 l designed for Sundeck box	
Bimini	•
Targa stainless steel or black coated aluminium	
Trailer	
Foldable base for sundeck	•
Walking cover for front with metal plate	
Navigation light	•
Ladder	•

## CUSHIONS

	Family package (optional)
Cushion front bench	•
Cushion rear bench	•
Backrest stainless steel with Cushion set	•
Backrest stainless steel only	
Backrest cushion only	
Cushions side benches (2 pcs)	•
Foldable Cushion for the Sundeck	•
Middle foldable cover	•
Pillow	• (2 pcs)









**PONTOONS**  
waterfun360.com  
A ROTO GROUP BRAND



**MOTORBOATS**  
waterfun360.com  
A ROTO GROUP BRAND



**SAILBOATS**  
waterfun360.com  
A ROTO GROUP BRAND



**PADDLEBOATS**  
waterfun360.com  
A ROTO GROUP BRAND



**waterfun  
360.com**  
A ROTO GROUP BRAND



Your  representative:



**Producer:**

 ROTO d.o.o., Gorička ulica 150, 9000 Murska Sobota, Slovenia

 nautic@roto.si  [nautica.roto.eu](http://nautica.roto.eu)

